

QUEEN ANNE c. 1880 – 1910 and STICK STYLE c. 1860 – 1890

Brunswick has a small number of buildings that display decorative elements typical of two nineteenth-century architectural styles, Queen Anne and Stick. The majority of the stylistic examples in Brunswick are fairly restrained. Queen Anne is one of several architectural styles that emerged during the Victorian era, a time period that generally corresponds to the reign of Queen Victoria in England (1837 – 1901). The term “Queen Anne” originated in England and was used to describe buildings whose design was influenced by late Medieval English architectural styles.

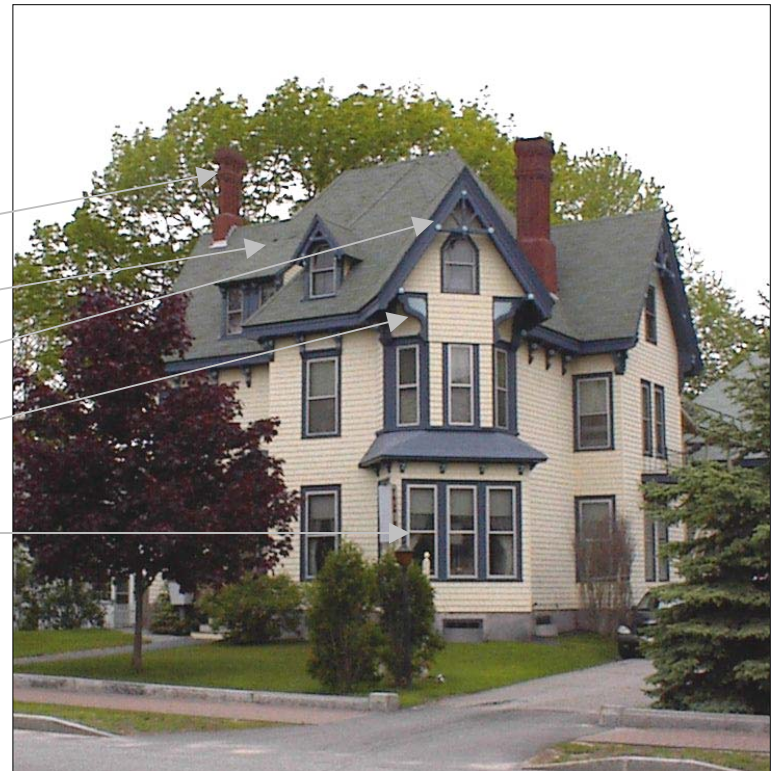
The increasing advancements in technology and industry allowed for the mass production of various house components, such as doors, balusters, windows, shingles, siding and brackets, which were then readily distributed across the country via the expanding railroad network. Not only were these architectural decorative details relatively easy to acquire, but they were also affordable. With the introduction of balloon frame construction, irregular floor plans could be readily achieved. All these factors contributed to the widespread popularity of the Queen Anne and Stick styles in America.

Queen Anne Defining Features:

- Chimneys patterned with decorative brick work.
- Complex roof form with projecting dormers.
- Decorative wood trim in the peak of the gable.
- Corner brackets.
- Bay windows, often square shaped.

Both Queen Anne and Stick style houses are characterized by irregular building forms with various projections from the wall surface, such as dormers, towers, bay windows, porches, and overhangs. Porches and eaves are often adorned with spindlework and brackets. A variety of shingle patterns are typically used on Queen Anne buildings, often in the gable ends.

Stick style detailing is typically comprised of horizontal, vertical or diagonal boards, or stickwork, that are intended to imply a sense of the building's structure, but in reality have no correlation to the structural system. In some cases siding may be applied in different directions on a façade to create a complex pattern and texture.





Stick Style Defining Features:

Cross gable roof.

Vertical boards (also diagonal or horizontal) across gable end.

Decorative band using a different siding material.

Curved decorative brackets.



Left: Decorative trusses in the peak of the gable are a popular architectural detail in Stick Style houses.