



BRUNSWICK LANDING PERIMETER TRAIL OFFICIAL OPENING

Saturday, October 28th, 8:30am

Please join us at the **Pine Street entrance** for the official opening of the newly signed interim perimeter trail at Brunswick Landing on Saturday, October 28th at 8:30am. Alignments for the trail were initially envisioned and conceptually mapped in the Brunswick Naval Air Station Reuse Master Plan and the Town's Recreation, Trails and Open Space Master Plan. Each plan depicts what a comprehensive network of trails might look like that would allow cyclists, pedestrians, runners and other trail users a way to travel throughout the Brunswick Landing property via a networked system. The trails will be developed over time contingent upon available funding.

Join other participants representing the Merrymeeting Wheelers Bicycle Club and the Midcoast Triathlon Club as we officially open the first fully signed corridor of the larger system of trails to be developed at Brunswick Landing. Bring your family and friends to travel along the entire length or shorter portions of the 5.2 mile route between its northern entrance at Pine Street and its southerly entrance at the intersection of Route 123 and Middle Bay Road. We hope to see you there!



Bowdoin

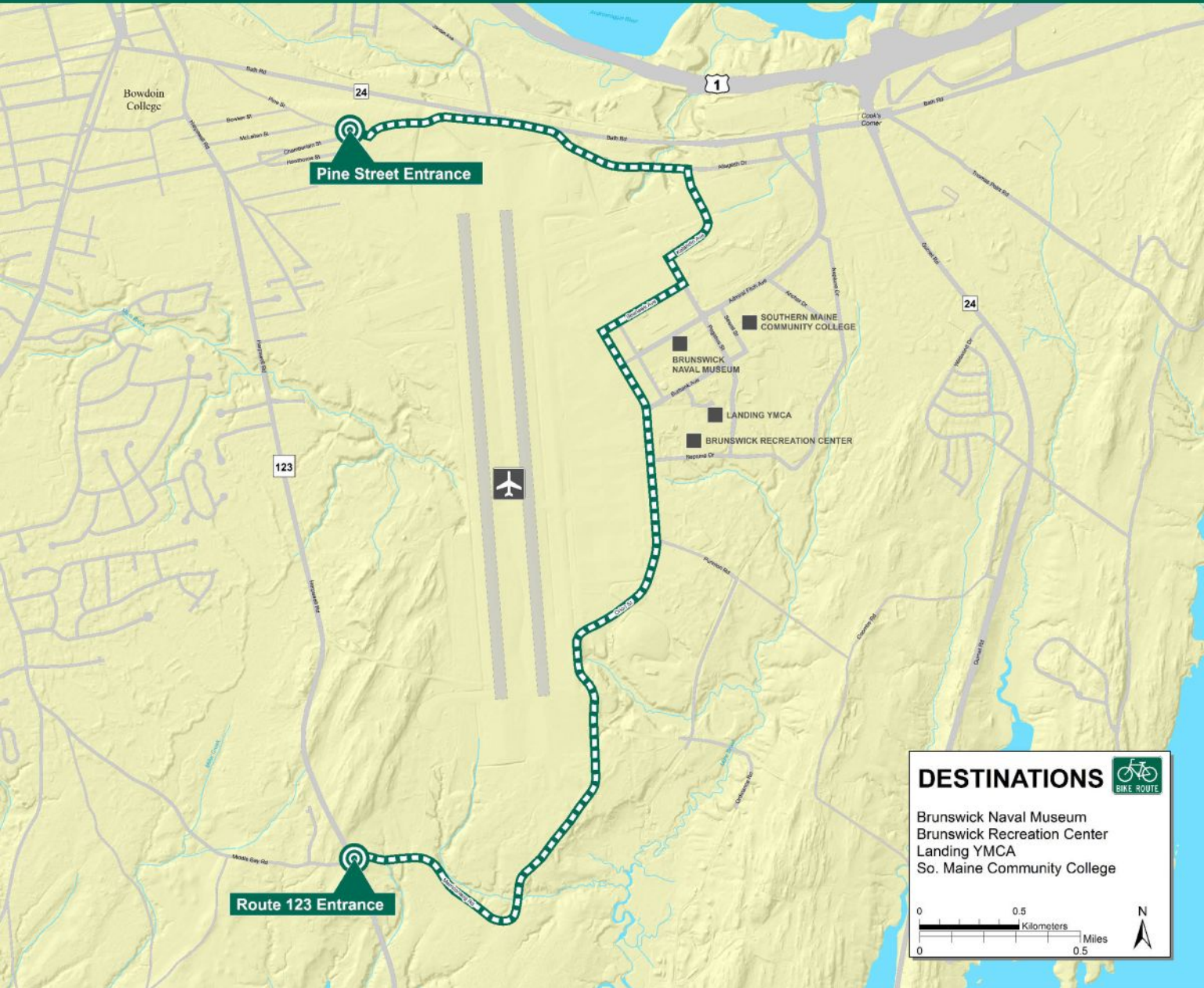



*Please see reverse side for a copy of
the trail route*



PERIMETER TRAIL

BRUNSWICK LANDING



DESTINATIONS 

- Brunswick Naval Museum
- Brunswick Recreation Center
- Landing YMCA
- So. Maine Community College

0 0.5 1 Kilometers
0 0.5 1 Miles

N

For more information, please contact:

Brunswick Parks & Recreation Department
220 Neptune Drive, Brunswick, ME 04011
207.725.6656
www.brunswickme.org/parks-recreation



Bowdoin

