



Brunswick Fire Department

2021 Presentation

STAFFING

CHIEF

2 DEPUTIES

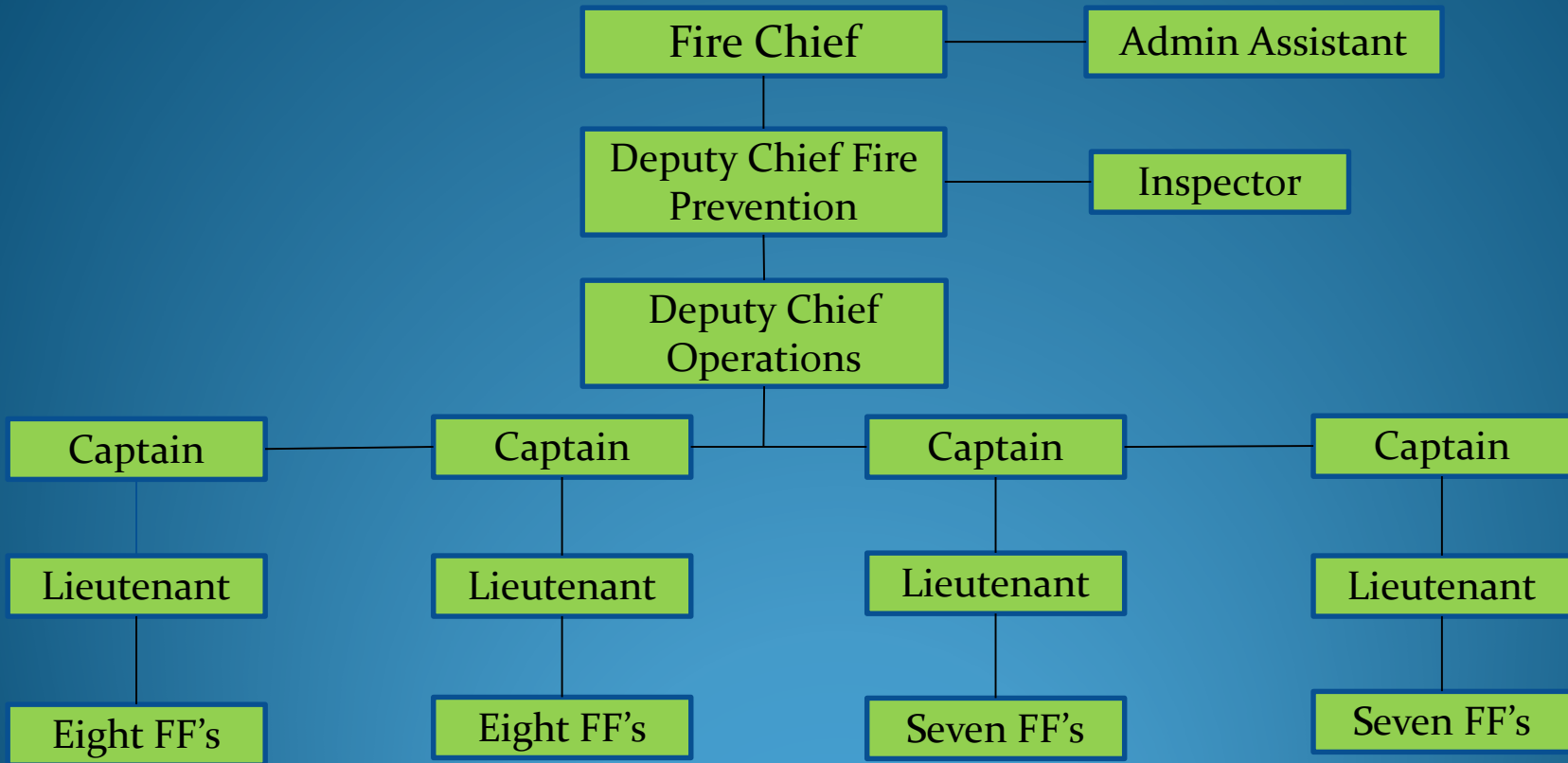
-1 Fire and Life Safety Inspector

1 ADMIN ASSISTANT

38 CAREER FIREFIGHTERS (2 SHIFTS OF 10, 2 SHIFTS OF 9)

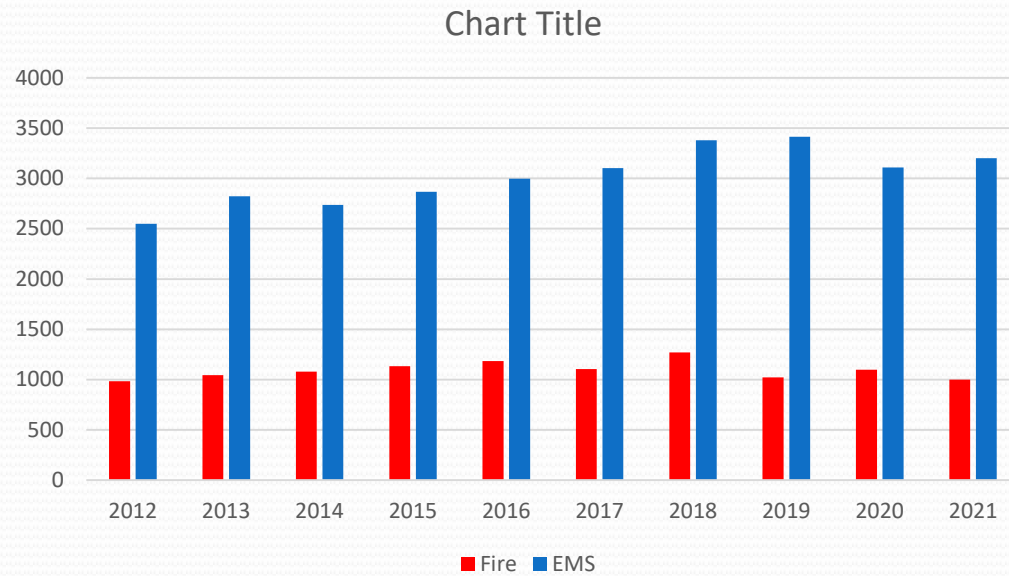
PROVIDE FIRE PROTECTION, EMS, HAZ MAT, HIGH ANGLE RESCUE, CONFINED SPACE RESCUE, ICE AND WATER RESCUE, FIRE INSPECTIONS, FIRE PREVENTION AND FIRE INVESTIGATION, EMERGENCY MANAGEMENT

Brunswick Fire Department 2021 Presentation



CALL STATS FISCAL YEAR

	FIRE	EMS
2012	985	2,549
2013	1,044	2,823
2014	1,078	2,736
2015	1,134	2,867
2016	1,184	2,997
2017	1,105	3,103
2018	1,271	3,379
2019	1,021	3,415
2020	1,099	3,110
2021	999	3,201



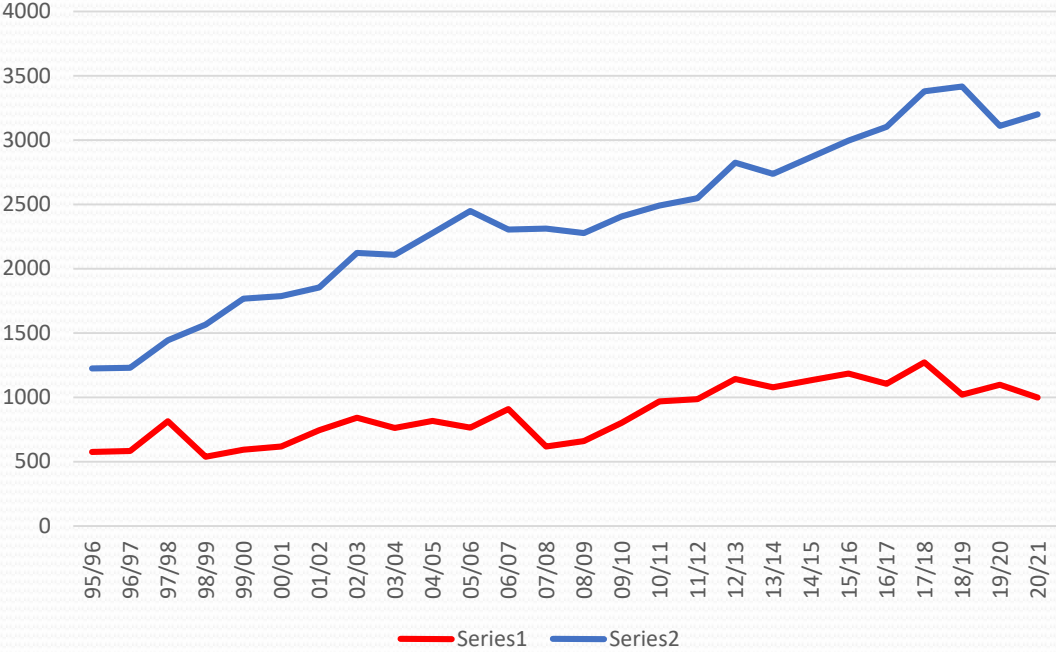
Prior 90 thru 1998 7 on a shift

Aug 99 went to 8 on a shift

Sept. 2019 went to 9 on a shift

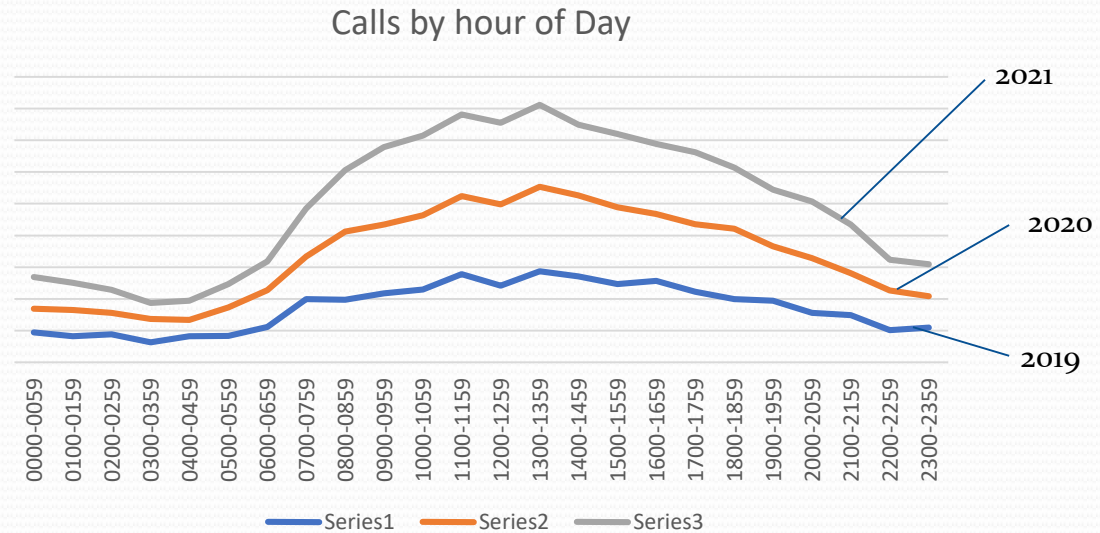
October 2021 2 shifts of 10
2 shifts of 9

26 year Trend



Calls for Service by hour of the Day

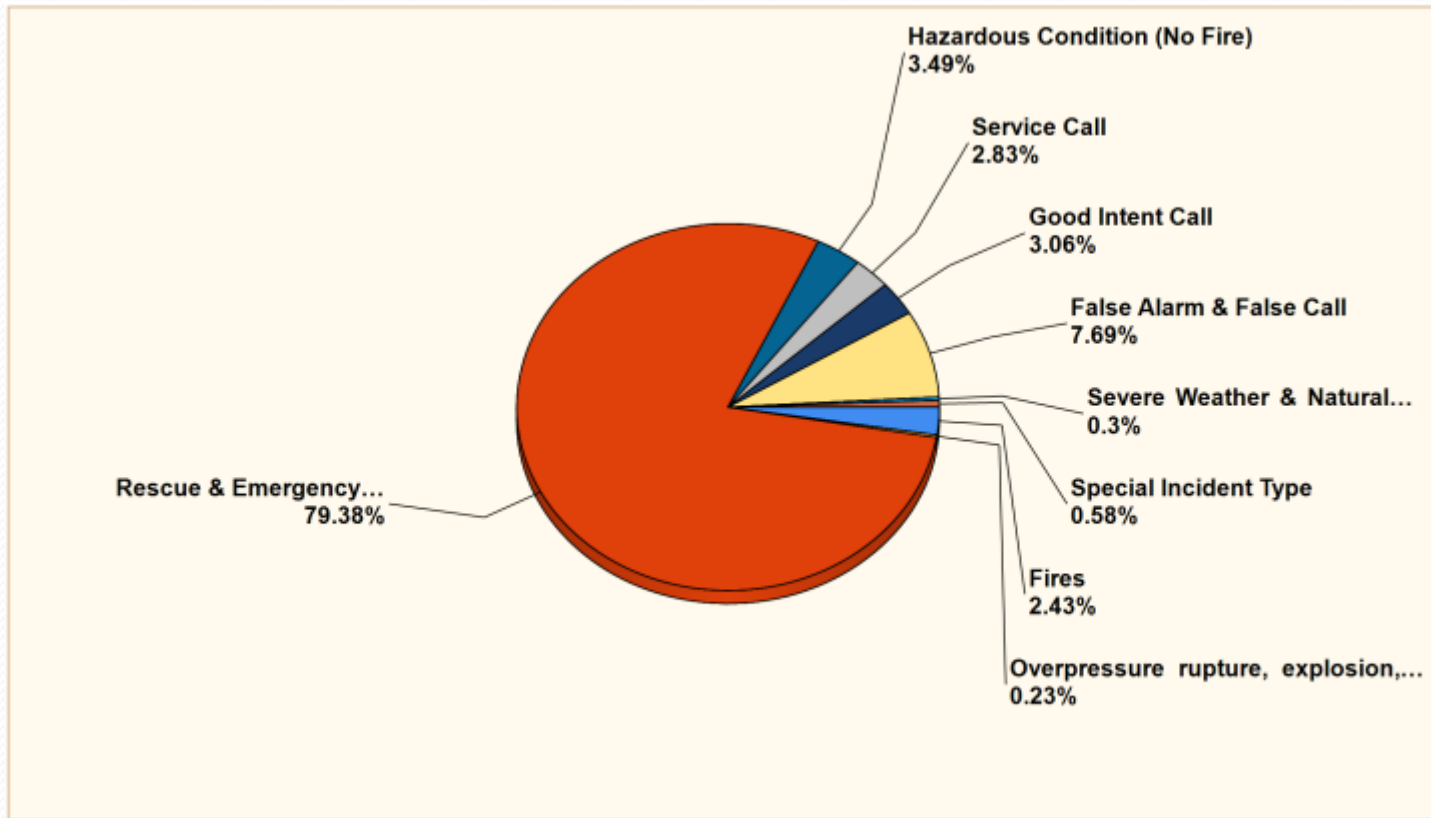
Hour	2019	2020	2021
0000-0059	94	75	100
0100-0159	82	83	86
0200-0259	88	68	73
0300-0359	63	74	50
0400-0459	82	52	60
0500-0559	83	90	74
0600-0659	111	117	90
0700-0759	199	134	152
0800-0859	197	215	194
0900-0959	217	217	245
1000-1059	230	234	251
1100-1159	278	246	258
1200-1259	242	256	257
1300-1359	287	266	259
1400-1459	271	255	223
1500-1559	247	242	231
1600-1659	257	211	221
1700-1759	222	213	227
1800-1859	199	222	193
1900-1959	194	172	178
2000-2059	156	172	179
2100-2159	149	132	153
2200-2259	101	125	97
2300-2359	109	99	101



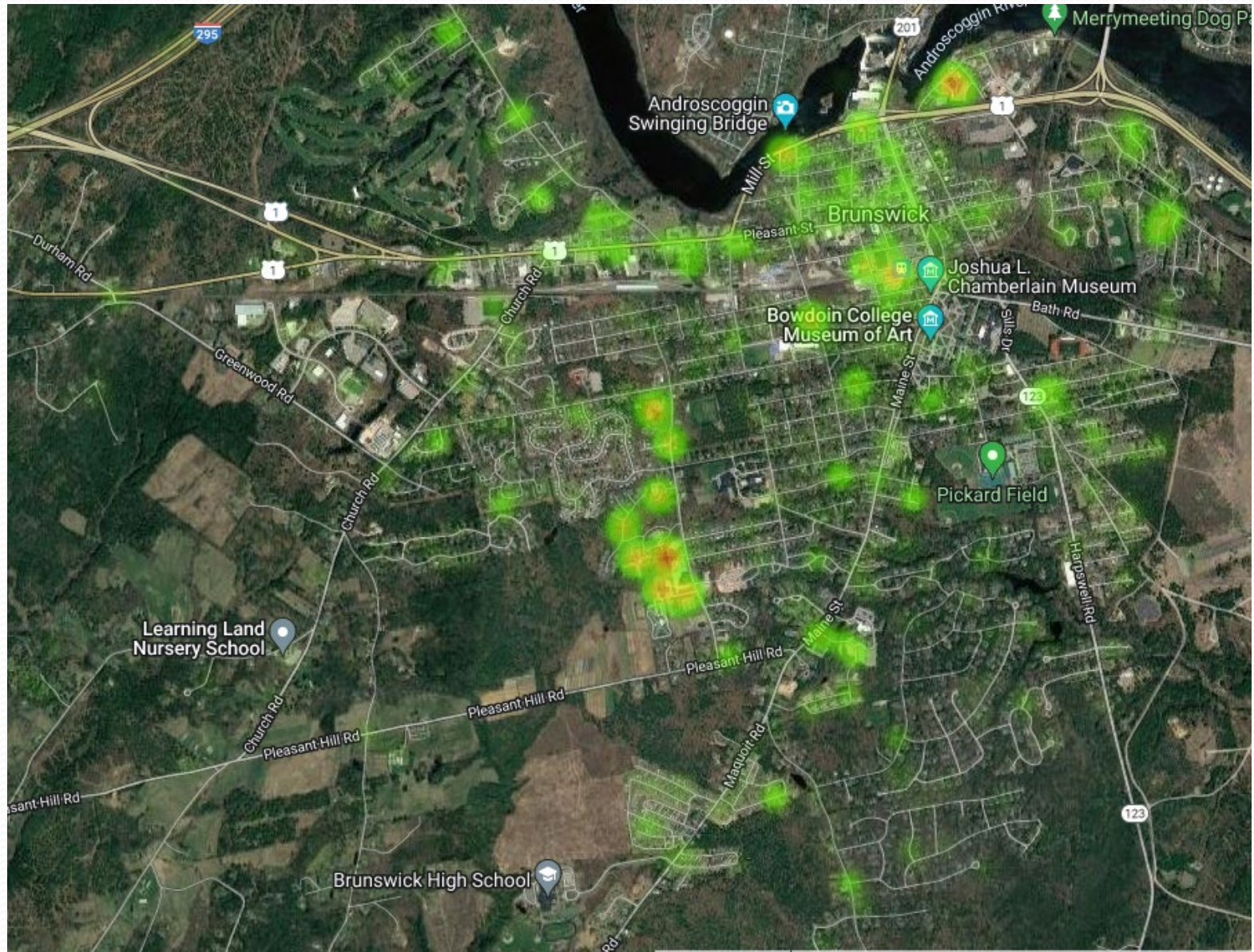
Most activity Starts between 4 and 5 a.m. Goes to between 10 and 11 p.m.



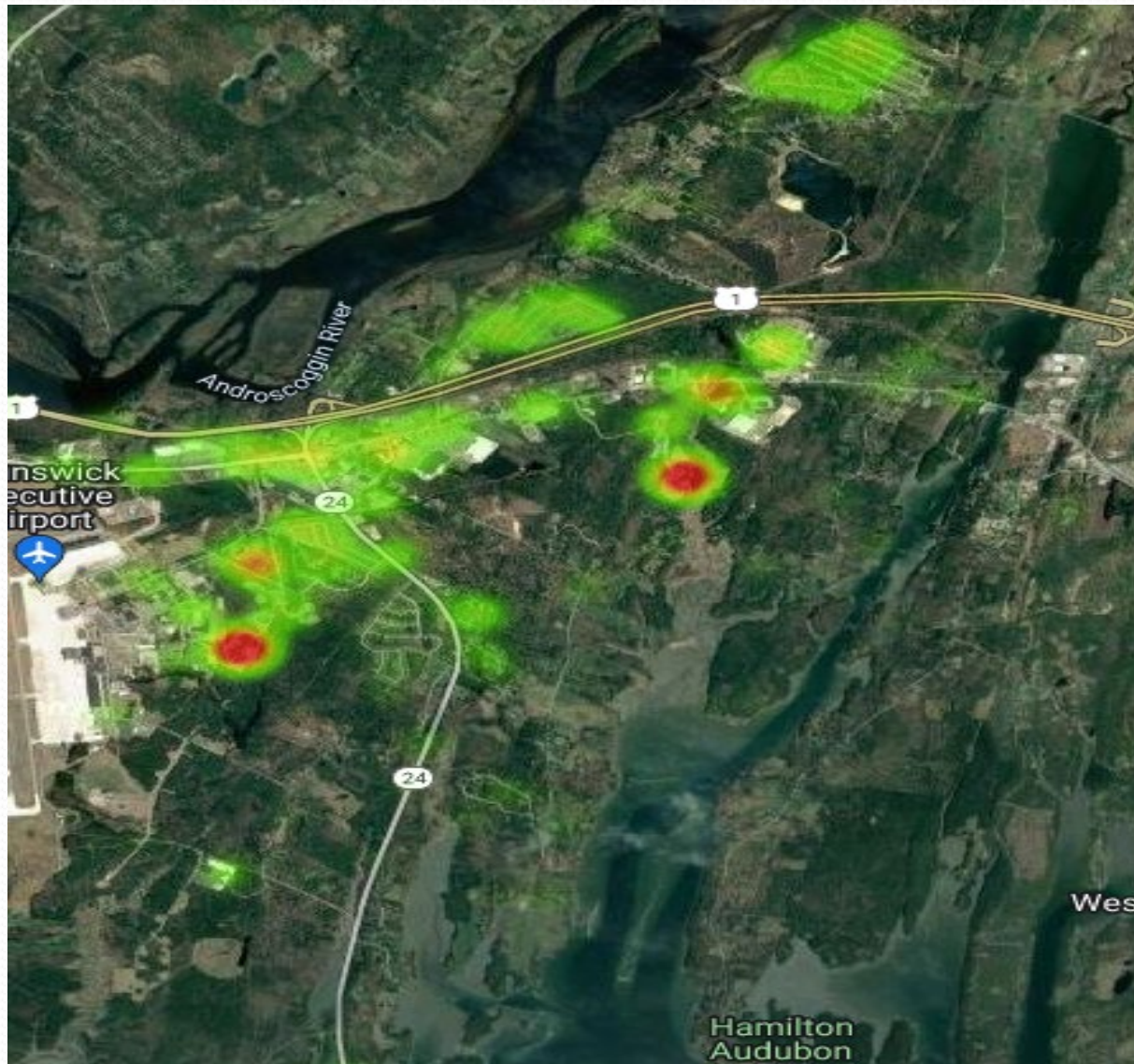
Breakdown by Major Incident Type FY 2019-2020



Heat Map of the Central Station District



Heat Map of the Emerson Station District



STAFFING COMPARISON

Municipality	Population	Calls	Sq Miles	Firefighters	FF's/1,000
Auburn	24,061	5,790	65	64	2.7
So. Portland	25,548	5,387	12	68	2.7
Augusta	18,795	7,500	55	48	2.6
Biddeford	22,000	5,942	30	48	2.2
Sanford	21,476	4,128	47	48	2.2
Westbrook	21,000	4,725	17	44	2.1
Saco	19,924	4,133	38	37	1.9
Brunswick	21,756	4,209	46	38	1.7
Scarborough	22,500	4,701	47	36	1.6

Sq. Miles Does Not include water area

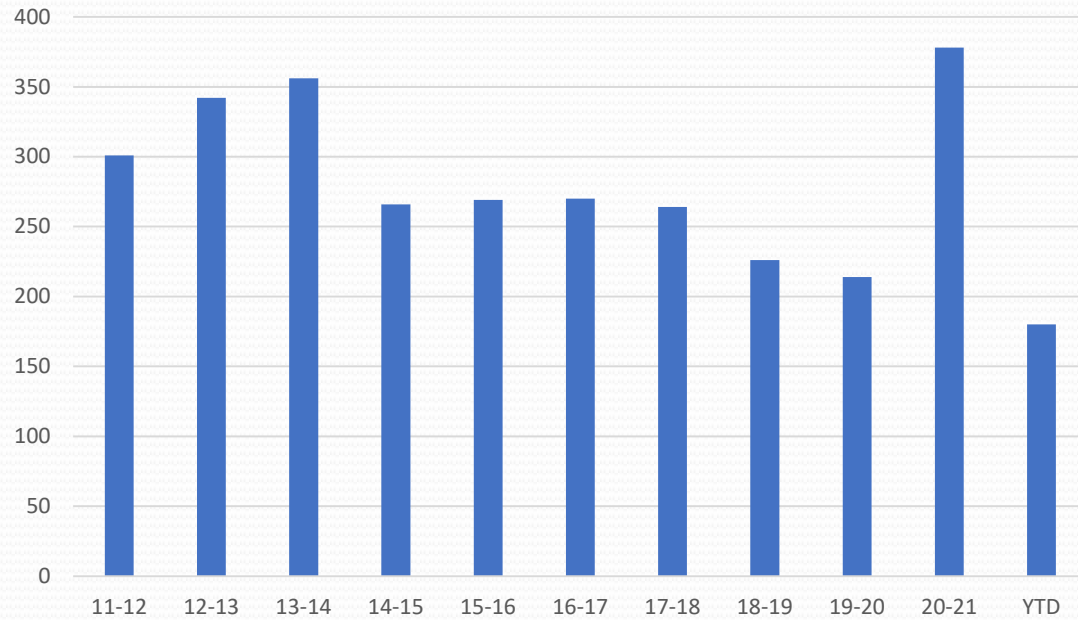


Request New Firefighters

- Goal is 10-12 on shift
 - Overall have seen steady increase in call volume over 20 years
 - Not Getting Callback personnel for station coverage
 - Used to have 30-40 call FF's
 - NAS Fire had 21 on a shift, Engine company of 4 whenever we needed it
 - Multiple over lapping calls
 - FY 19 1446 overlapping calls, 34.78%
 - FY 20 1272 overlapping calls, 32.02%
 - FY 21 1317 overlapping calls, 33.32%
 - Transporting EMS Patients to MMC
 - FY 18 103
 - FY 19 110
 - FY 20 160
 - YTD 163
 - Longer transport and turn around time.
 - EMS Protocol changes requiring more people for long periods of time
 - Every Department seeing more mutual Aid requests
 - Brunswick Landing more area and more buildings (FY 21 did 405)

	Inspections
11-12	301
12-13	342
13-14	356
14-15	266
15-16	269
16-17	270
17-18	264
18-19	226
19-20	214
20-21	378
YTD	180

Inspections



BUDGET BREAKDOWN

Operations

\$796,890.00

Salaries

\$2,872,889.00

Benefits

\$1,273,708.00

- Salaries
- Benefits
- Operations

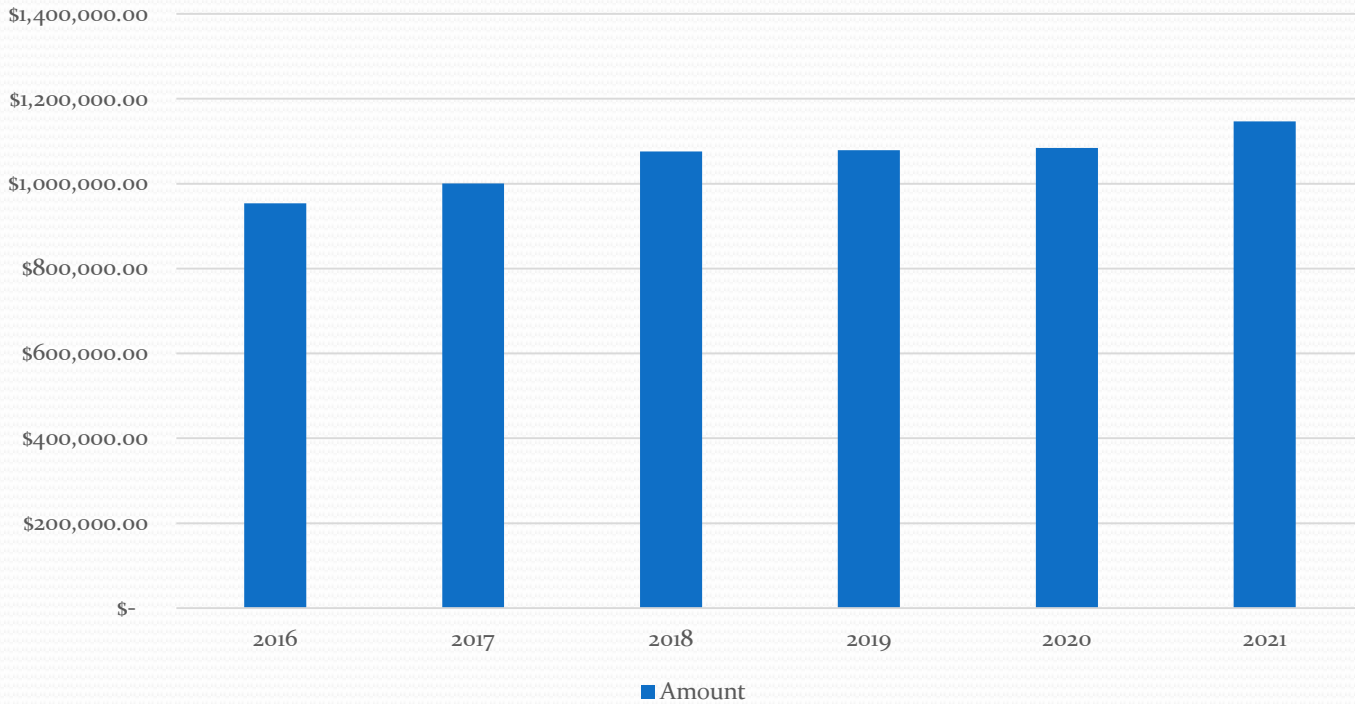
Salaries – Current \$2,611,980.00
Requested \$2872889.00
Includes request for 2 new personnel

Benefits – Current \$1,177,063.00
Requested \$1,273,708.00

Operations – Current \$543,575.00 (includes Central and Emerson Station budgets)
Requested \$796,890.00 (includes Central and Emerson Station Budgets and New Central Station)
-includes Capital equipment and Fire Prevention



Ambulance Revenue



Mutual Aid

	EMS	Fire
Given	55	27
Received	19	12



CHALLENGES

1. Continued increase in costs, both Personnel and Operational
2. Increase in calls for service continues to stretch our current resources
 1. STAFFING
 - a. Has not kept up with the increase in calls over 20 plus years
 - b. Difficult when covering 2 stations
 - c. Changes with Maine EMS Protocols require more personnel on certain types of calls
3. Brunswick Landing, as more buildings come on-line and increased use of the area
4. With increased call volume, training on duty becoming more and more difficult

